

A photograph of children playing soccer on a grassy field, overlaid with a semi-transparent purple filter. In the foreground, a young girl in a striped shirt and dark dress is kicking a soccer ball. A boy in a white shirt and jeans is running towards her. In the background, another child is visible, slightly out of focus.

**GREATERSPORT**

**WORKFORCE  
BOROUGH PRESENTATION  
MANCHESTER**

# SOCIO-ECONOMIC STATUS

## 20.8%

Of the population of Manchester are Students.

## 33.6%

Of the population are from NS SEC 6-8 compared to 34.2% in GM.

## 21.5%

Of the population are from NS SEC 3-5, compared to 28.3% in GM.

## 24.1%

Of the population are from NS SEC 1-2, compared to 27.5% in GM.





# ETHNICITY OF RESIDENTS

**4.60%**

Of the population of Manchester are mixed, compared to 2.26% in GM.

**17.1%**

Of the population are Asian, compared to 10.2% in GM.

**8.64%**

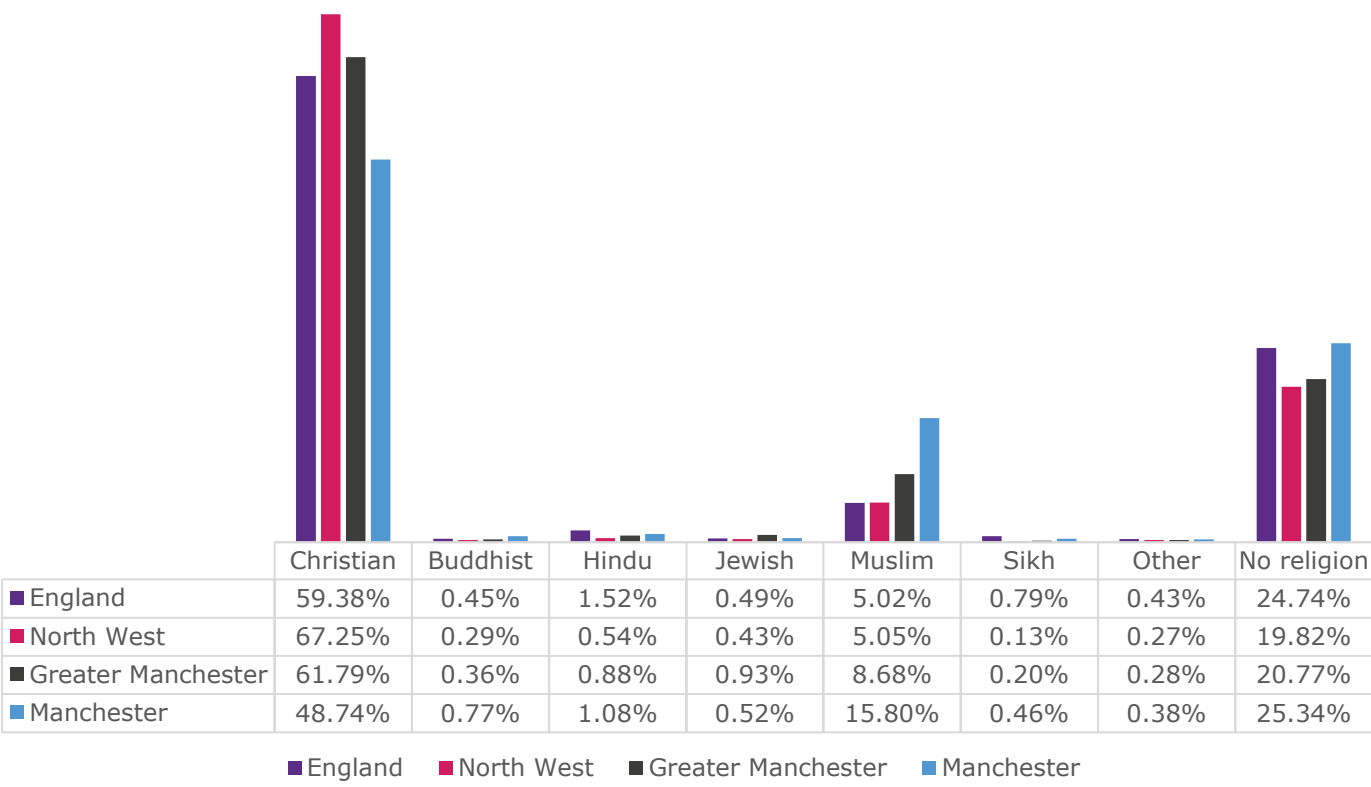
Of the population are black compared to 2.8% in GM.

**3.06%**

Of the population are other. compared to 1.02% in GM.



# ETHNICITY OF RESIDENTS





# ETHNICITY OF RESIDENTS

Of four clusters identified across GM has having highest BAME population, two are in Manchester: North Manchester: Cheetham and Crumpsall and Central Manchester: Ardwick, Longsight and Moss Side. Consultation conducted across GM with Faith Centres VIA 8 Focus Groups and 160 survey responses, identifying:

## MOTIVATIONS

**STAYING HEALTHY/ WEIGHT LOSS - WOMEN**

**SOCIAL ASPECT AND HAVING A FRIEND TO GO WITH**

**LEARNING A NEW SKILL**

**FAITH & HEALTH – PARTICULARLY HINDUISM**

## BARRIERS

**MARRIAGE & FAMILY COMMITMENTS - FEMALES**

**LANGUAGE BARRIER / PARENTAL ATTITUDES – OLDER GENERATION**

**NOT FEELING WELCOME IN NON BAME ENVIRONMENT**

**LACK OF BAME ROLE MODEL**

**LACK OF AWARENESS OF OPPORTUNITIES**

## RECOMMENDATIONS

**USE FAITH CENTRES AS A HUB**

**TRAIN FAITH CENTRE VOLUNTEER WORKFORCE**

**MESSAGE – BRING FAMILY AND COMMUNITY TOGETHER**

**SUPPORT TO CONNECT TO FUNDING WITH OTHER SPORT/PA ORGANISATIONS**



# PREMATURE MORTALITY

Per 100k

## 94.9

People die early of CVD in Manchester compared to 46.7 people in England.

## 128.6

Die early from cancer, compared to 79.4 people in England.

## 46.7

Die early from a respiratory disease, compared to 18.6 people in England.







GREATERSPORT

# VOLUNTEERING VCSE SECTOR STATE OF THE SECTOR



A joint venture to support  
the local VCSE sector  
in the ten boroughs of  
Greater Manchester

## HOW MANY ORGANISATIONS IN THE VCSE SECTOR?

There are an estimated 15,890 organisations in GM, 77% are micro organisations with an income below £10,000

**3,394 ORGANISATIONS IN MANCHESTER (930 REGISTERED)**

**66% MICRO ORGANISATIONS**

**87,400 VOLUNTEERS**

**11,000 FTE PAID STAFF**

**6.1 MILLION INTERVENTIONS**

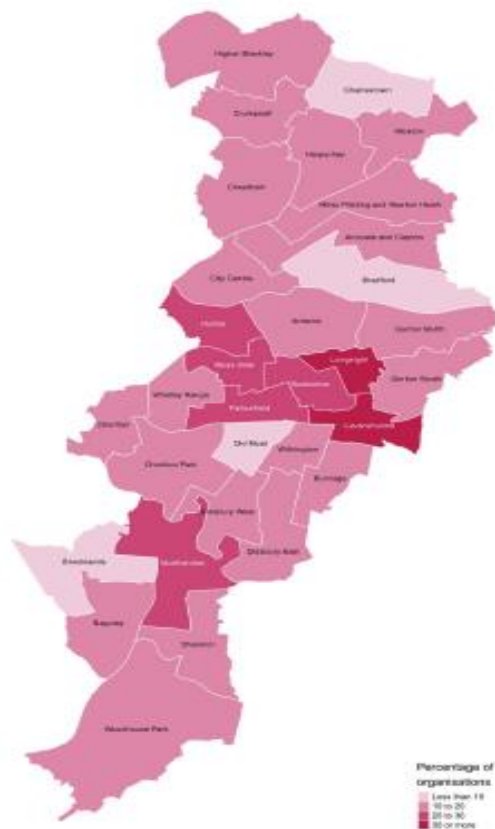
**13% IN SPORT AND LEISURE**

**79% PLAN OR ARE WORKING WITH THE VCSE SECTOR**



## ORGANISATIONS IDENTIFYING MANCHESTER AS KEY AREA:

Map 4.1: Percentage of organisations that identify City of Manchester wards as a main focus of their work



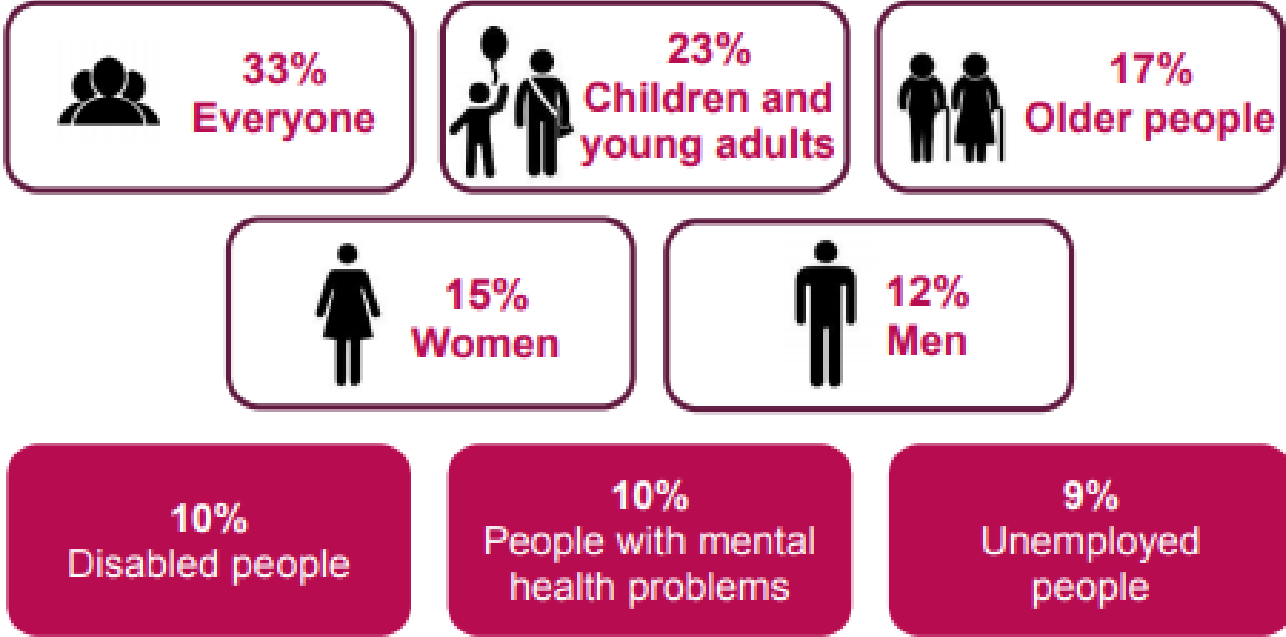
Source: City of Manchester State of the VCSE sector survey 2016/17  
Base: 83

30 per cent of City of Manchester organisations identified Levenshulme as a main focus of their work, the same number as identified Longsight.

In addition between 20 and 30 per cent of City of Manchester organisations identified Hulme, Moss Side, Rusholme, Fallowfield and Northenden as a main focus.

The four wards which were a main focus for the lowest proportions of City of Manchester organisations were Old Moat, Charlestown, Bradford and Brooklands, all a main focus for less than 10 per cent of City of Manchester organisations.

# WHO BENEFITS FROM THIS WORK?



## MANCHESTER

27% EVERYONE

26% CHILDREN & YOUNG PEOPLE

8% OLDER PEOPLE

13% WOMEN & 7% MEN

14% PEOPLE WITH MENTAL HEALTH PROBLEMS

8% PEOPLE WITH A LEARNING DISABILITY

16% ETHNICITY

9% REFUGEES

13% UNEMPLOYED



## TYPES OF ORGANISATIONS IN MANCHESTER:

**24% LOCAL VCSE**

**12% COMMUNITY/ NEIGHBOURHOOD**

**10% SOCIAL ENTERPRISE**

**7% COMMUNITY CENTRE/ VILLAGE HALL**

**4% FAITH GROUP**

**5% SPORTS CLUB**

**4% LOCAL BRANCH OR NATIONAL**

# WHERE DO THESE ORGANISATIONS WORK?

## GM



## MANCHESTER

44% HEALTH AND WELLBEING

49% COMMUNITY DEVELOPMENT

13% SPORT AND PHYSICAL ACTIVITY

33% EDUCATION, TRAINING AND RESEARCH

16% ARTS, HERITAGE AND CULTURE

13% SOCIAL CARE

13% ENVIRONMENT

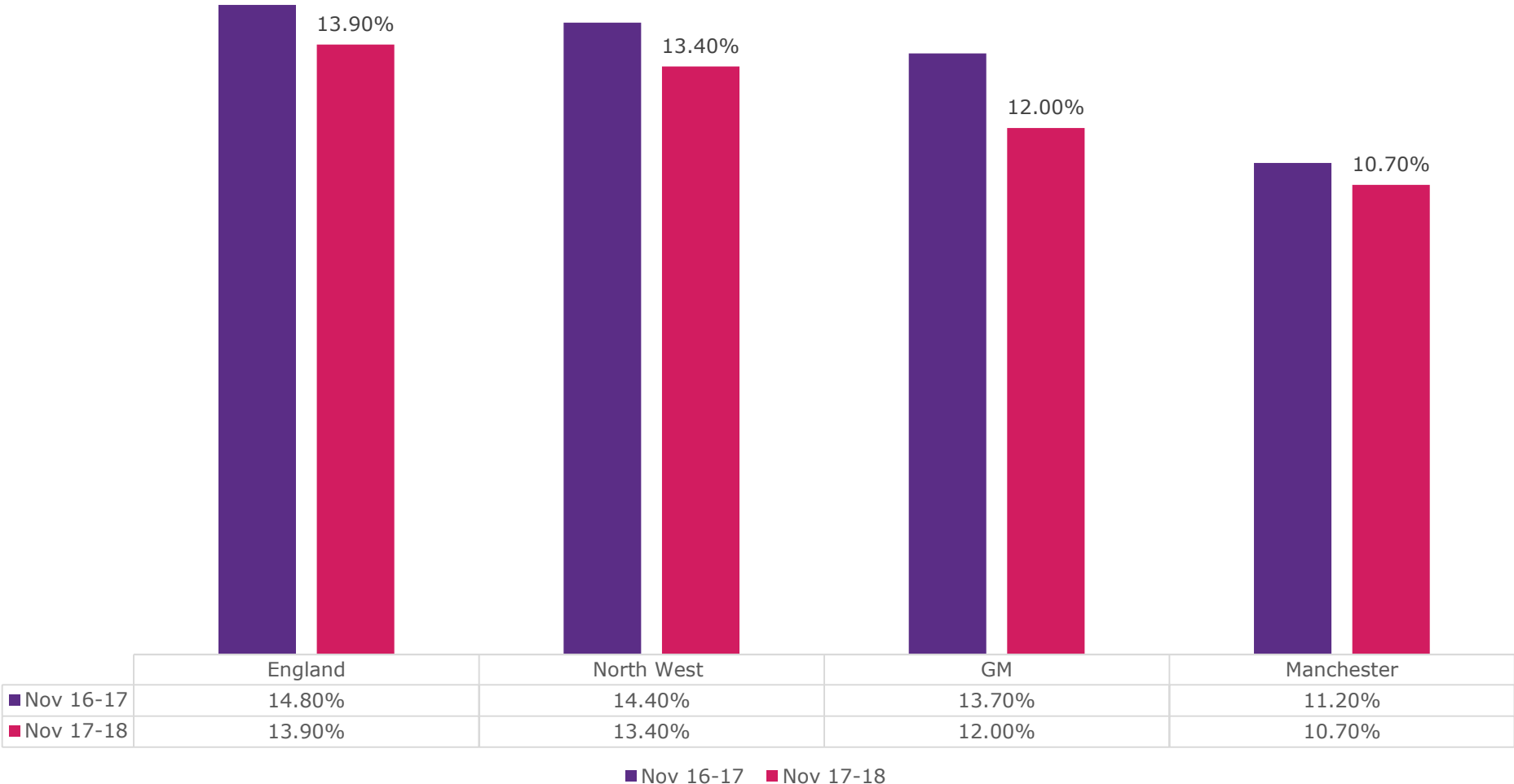


GREATERSPORT

# **VOLUNTEERING ACTIVE LIVES**



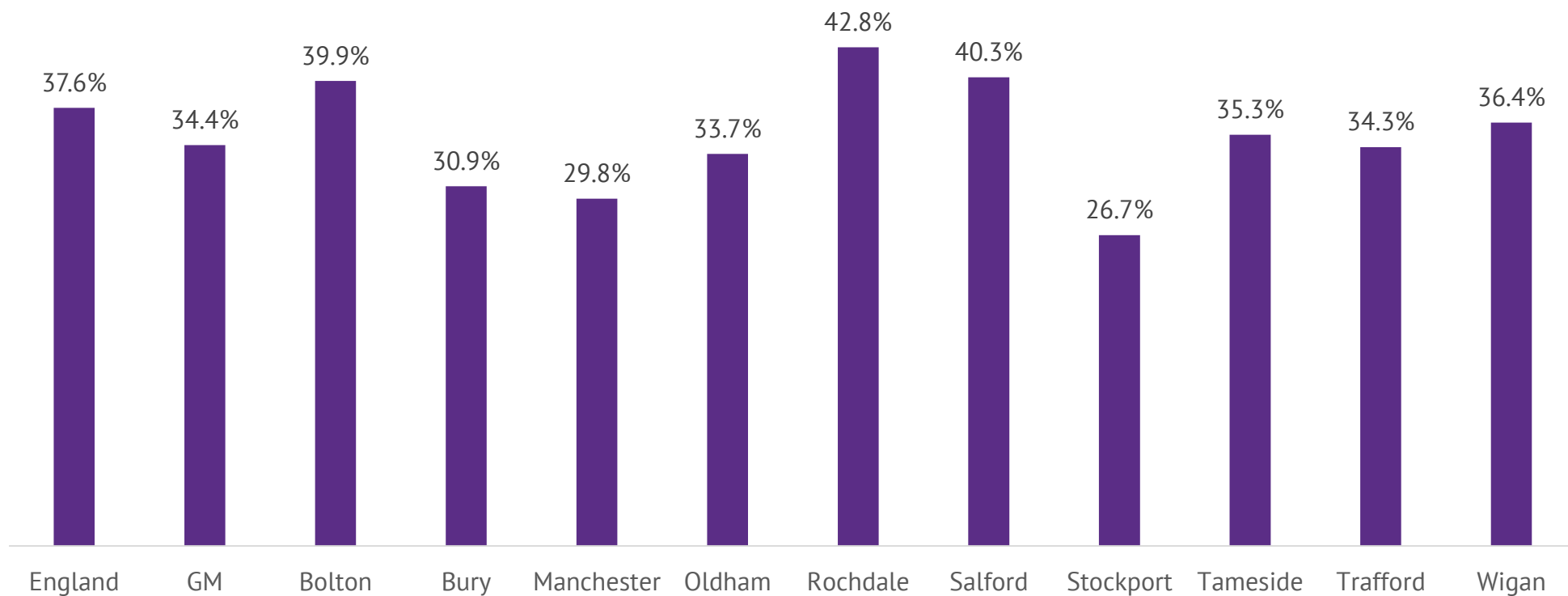
# VOLUNTEERING – ACTIVE LIVES





# VOLUNTEERING – ACTIVE LIVES

Volunteered at least twice in the last 12 months Years 5-11



# KEY POINTS

## STUDENTS

There is a high population of students in Manchester, this is a life stage where males and females are both as likely to volunteer in the sport sector in some roles. 13% of organisations in the VCSE sector focus on women. Within Manchester there are 40.8% living in the 10% Most deprived LSOAs.

## PREMATURE MORTALITY

94.9 people in every 100K in Manchester die prematurely from Cardiovascular disease, compared To 46.7 people in England, 128.6 people in every 100k die prematurely from Cancer, compared To 79.4 in England and 46.7 people in every 100k die prematurely from respiratory disease, Compared to 18.6 in England. Only 8% of the current sector focuses on older people.

## ETHNICITY/ FAITH GROUPS

4% of current VCSE organisations operate in Faith Groups, of those who benefit from the work, 16% Are from ethnic backgrounds. Cheetham, Crumpsall, Ardwick, Longsight and Moss Side, have high levels of BAME residents. Within Manchester 15.8% of residents are Muslim and 1.08% are Hindu, Which is higher than both England and GM. The Asian population is 17.1%.