

A photograph of children playing soccer on a grassy field, overlaid with a semi-transparent purple filter. In the foreground, a young girl in a striped shirt and dark dress is kicking a soccer ball. A boy in a white and grey long-sleeved shirt and jeans is running towards her. In the background, another child is visible, slightly out of focus.

**GREATERSPORT**

**WORKFORCE  
BOROUGH PRESENTATION  
TAMESIDE**

# OBESITY TAMESIDE

## RECEPTION

### Legend

Tameside Reception Obesity

- 0.0% - 5.0%
- 5.0% - 10.0%
- 10.0% - 15.0%
- 15.0% - 20.0%
- 20.0% - 25.0%
- 25.0% - 30.0%
- 30.0% - 35.0%
- 35.0% - 40.0%

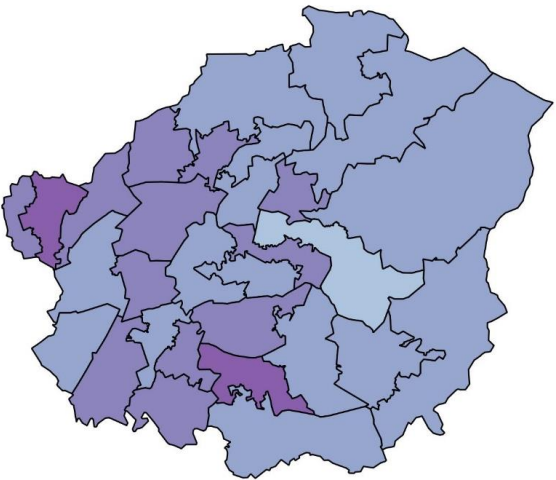


## YEAR 6

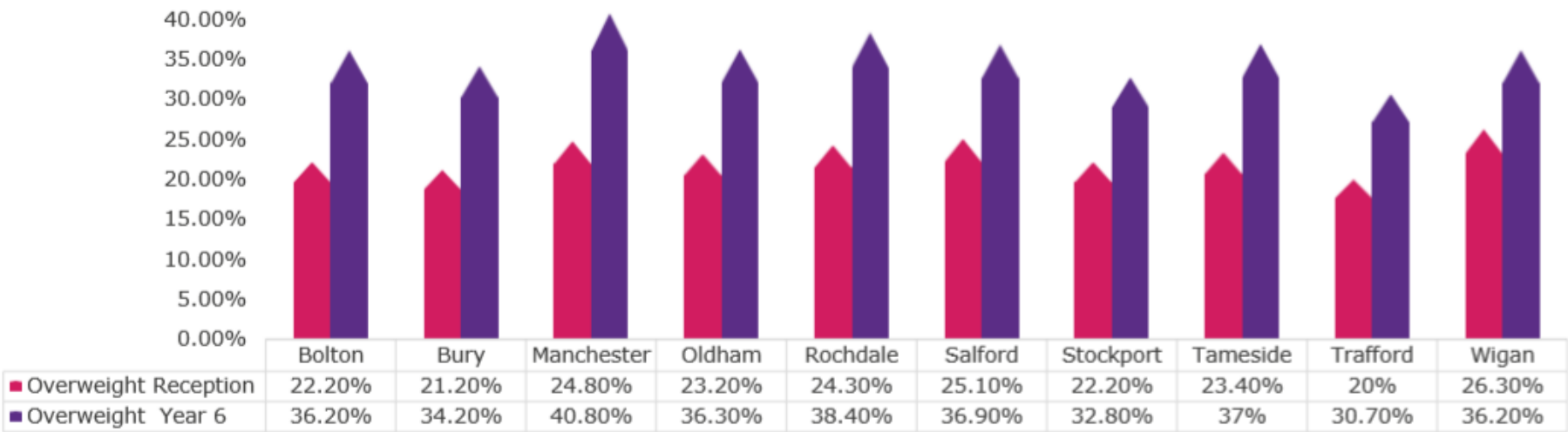
### Legend

Tameside Year 6 Obesity

- 0.0% - 5.0%
- 5.0% - 10.0%
- 10.0% - 15.0%
- 15.0% - 20.0%
- 20.0% - 25.0%
- 25.0% - 30.0%
- 30.0% - 35.0%
- 35.0% - 40.0%



# OBESITY GM



# DISABILITY & MENTAL WELLBEING TAMESIDE

## 20.9%

Of people in Tameside with a long term disability or health condition, compared to 17.6% in England and 19.43% in Greater Manchester.

## 5.6%

Of people in Tameside have low worthwhile, compared to 3.6% of people in England.

## 24.2%

Of people in Tameside have high levels of anxiety, compared to 19.9% in England.

## 10.6%

Of people in Tameside have low happiness, compared to 8.5% of people in England.

## 6.1%

Of people in Tameside have low satisfaction, compared to 4.5% in England.



GREATERSPORT

# VOLUNTEERING VCSE SECTOR STATE OF THE SECTOR



A joint venture to support  
the local VCSE sector  
in the ten boroughs of  
Greater Manchester

## HOW MANY ORGANISATIONS IN THE VCSE SECTOR?

There are an estimated 15,890 organisations in GM, 77% are micro organisations with an income below £10,000

**1,167 ORGANISATIONS IN TAMESIDE (270 REGISTERED)**

**68% MICRO ORGANISATIONS**

**26,000 VOLUNTEERS**

**1,300 FTE PAID STAFF**

**1.5 MILLION INTERVENTIONS**

**34% IN SPORT AND LEISURE**

**54% PLAN OR ARE WORKING WITH THE VCSE SECTOR**

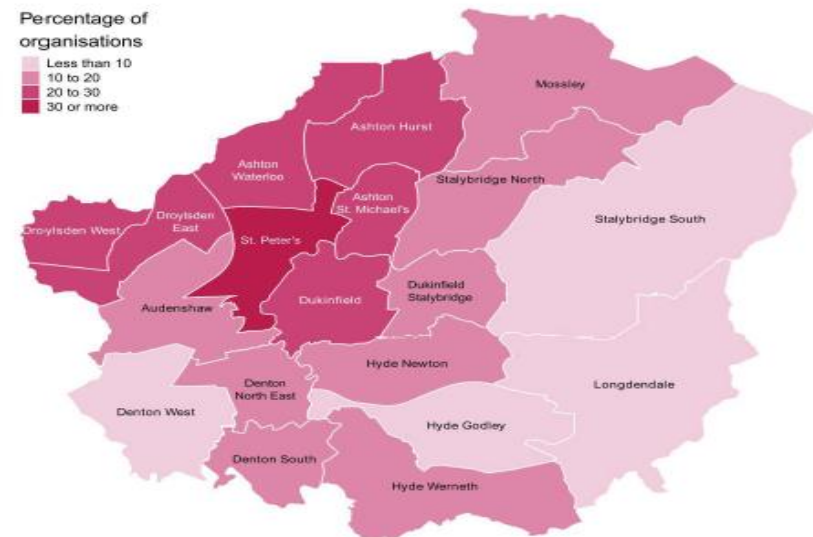
## ORGANISATIONS IDENTIFYING TAMESIDE AS KEY AREA:

35 per cent identified Ashton St Peter's as a main focus of their work. The next two most common wards were Ashton St. Michael's (28 per cent) and Ashton Hurst (25 per cent).

The four wards which were a main focus for the lowest proportions of Tameside organisations were:

- Denton West (ten per cent)
- Stalybridge South (ten per cent)
- Hyde Godley (eight per cent)
- Longdendale (seven per cent).

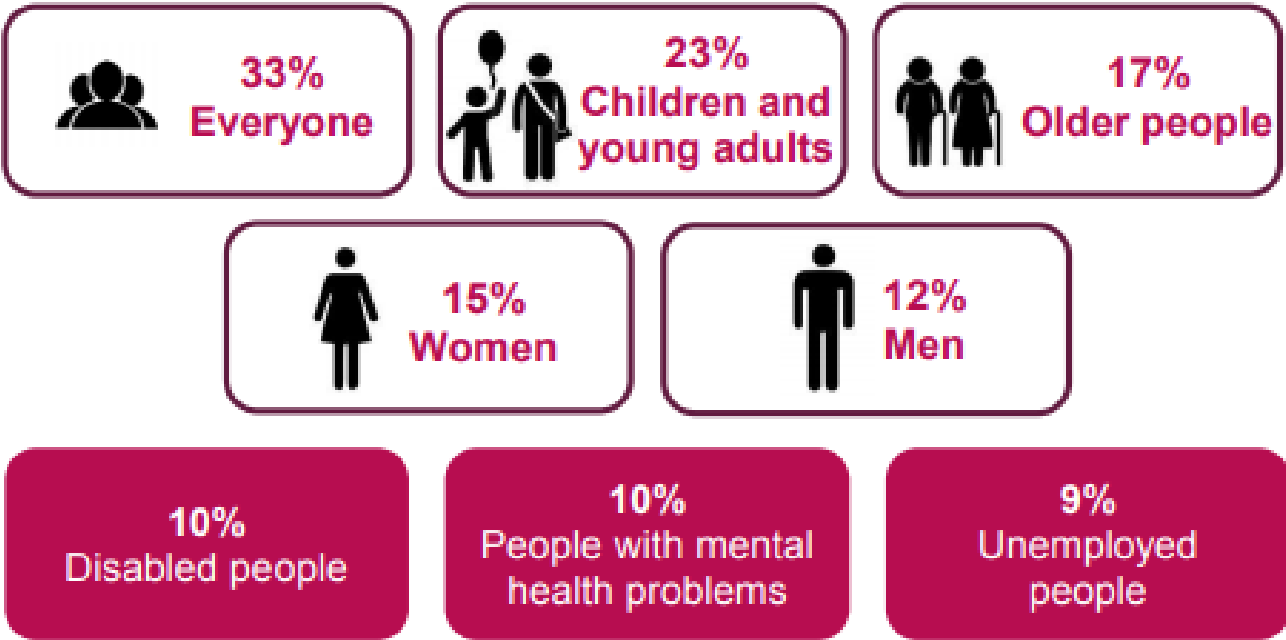
Map 4.1: Percentage of organisations that identify Tameside's wards as a main focus of their work



Source: Tameside State of the VCSE sector survey 2016/17  
Base: 72

# WHO BENEFITS FROM THIS WORK?

**GM**



**TAMESIDE**

**38% EVERYONE**

**28% CHILDREN & YOUNG PEOPLE**

**16% OLDER PEOPLE**

**15% WOMEN & 14% MEN**

**9% PEOPLE WITH MENTAL HEALTH PROBLEMS**

**7% PEOPLE WITH A DISABILITY**

**6% PEOPLE WITH LEARNING DISABILITIES**

**9% LONE PARENTS & FAMILIES**

**6% UNEMPLOYED**

## TYPES OF ORGANISATIONS IN TAMESIDE:

**20% LOCAL VCSE**

**19% COMMUNITY/ NEIGHBOURHOOD**

**3% SOCIAL ENTERPRISE**

**6% COMMUNITY CENTRE/ VILLAGE HALL**

**9% FAITH GROUP**

**10% SPORTS CLUB**

**9% LOCAL BRANCH OR NATIONAL**

# WHERE DO THESE ORGANISATIONS WORK?

## GM



## TAMESIDE

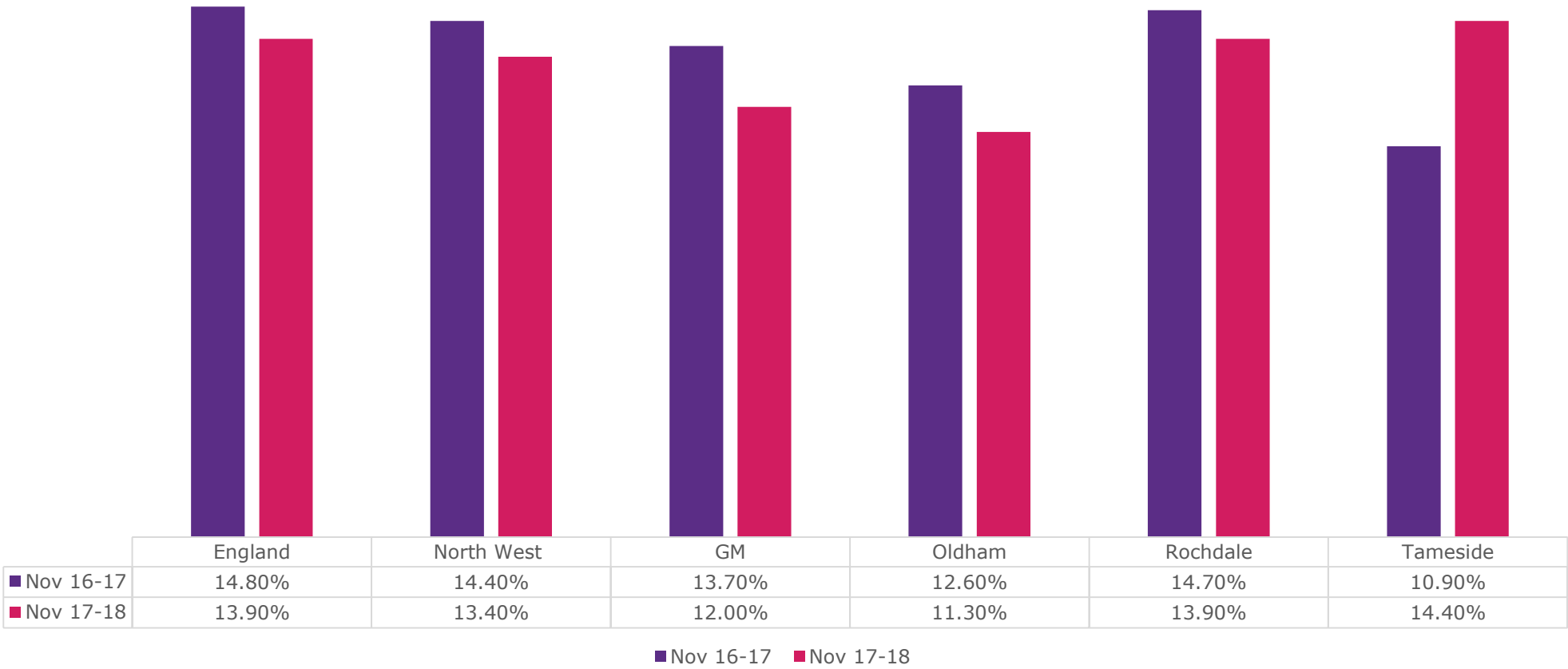
- 46% HEALTH AND WELLBEING
- 33% COMMUNITY DEVELOPMENT
- 34% SPORT AND PHYSICAL ACTIVITY
- 24% EDUCATION, TRAINING AND RESEARCH
- 14% ARTS, HERITAGE AND CULTURE
- 9% ENVIRONMENT
- 10% RELIGIOUS

GREATERSPORT

# VOLUNTEERING ACTIVE LIVES

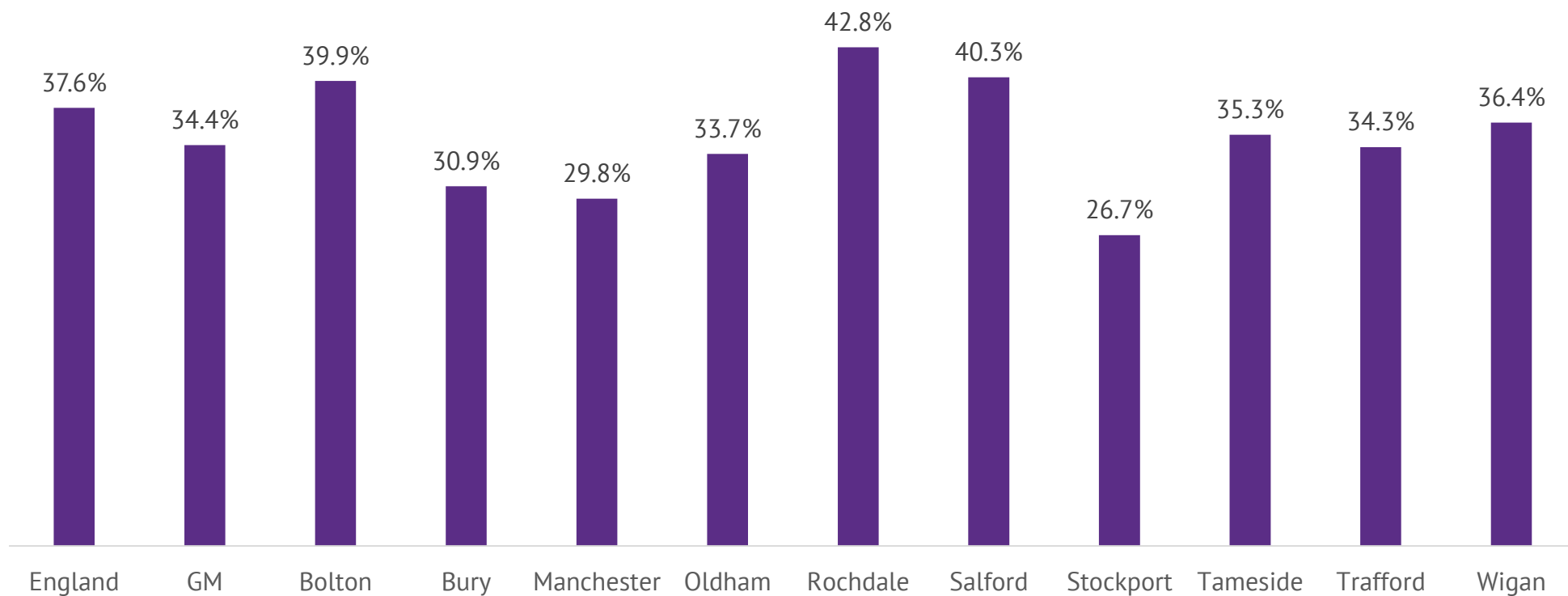


# VOLUNTEERING – ACTIVE LIVES



# VOLUNTEERING – ACTIVE LIVES

Volunteered at least twice in the last 12 months Years 5-11



# KEY POINTS

## INACTIVE COHORTS

Across Tameside inactivity is higher than GM in many MSOAs and higher than England in most other MSOAs. 34% of the Focus is on Sport and Leisure and compared to 12% in GM, 14.4% of Tameside volunteer in sport, according To the Active Lives survey.

## LONG TERM HEALTH CONDITIONS/ DISABILITY

20.9% of people in Tameside have a long term health condition or disability, compared to 17.6% in England and 19.43% in GM. People with long term health conditions are more likely to Informally Volunteer. 24.2% of Tameside residents have High anxiety, only 9% of people who Benefit from the VCSE sector have poor mental health.

## HYDE/ GODLEY AREA FOCUS

The lowest proportion of organisations focus on this area (8%). This area has high inactivity and high levels of obesity at the end of year 6. This is an area high in inequalities, with few organisations operating in this area.