

Greater Manchester
Moving > ^ < v
gmmoving.co.uk

Conference 2025

Sponsored by

FUTURE FIT
FOR BUSINESS



ANDY BURNHAM
MAYOR OF
GREATER
MANCHESTER

GMCA GREATER
MANCHESTER
COMBINED
AUTHORITY

NHS
in Greater Manchester



**Greater
Manchester
Integrated Care
Partnership**

Greater Manchester
VCFSE Leadership Group
The sector's voice in devolution

GM ACTIVE

A photograph of four diverse women in athletic wear high-fiving outdoors in a park. The women are smiling and appear to be celebrating. The background shows a grassy field and some houses in the distance.

Creating safe, inclusive spaces in sport and physical activity

Practical steps for progress

Sport Welfare Officers Network

Greater Manchester
Moving > ^ < v

- We're part of a national network funded by **Sport England**.
- We're here to support club volunteers to create **safer and more inclusive** club environments.
- We work with National Governing Bodies and local organisations to promote **best practice and an effective welfare culture** in clubs.





Street Games

StreetGames is one of the UK's leading 'sport for development' charities harnessing the power of sport to create positive change in the lives of young people living in underserved communities right across the UK.

Our work helps to make young people and their communities healthier, safer and more successful.

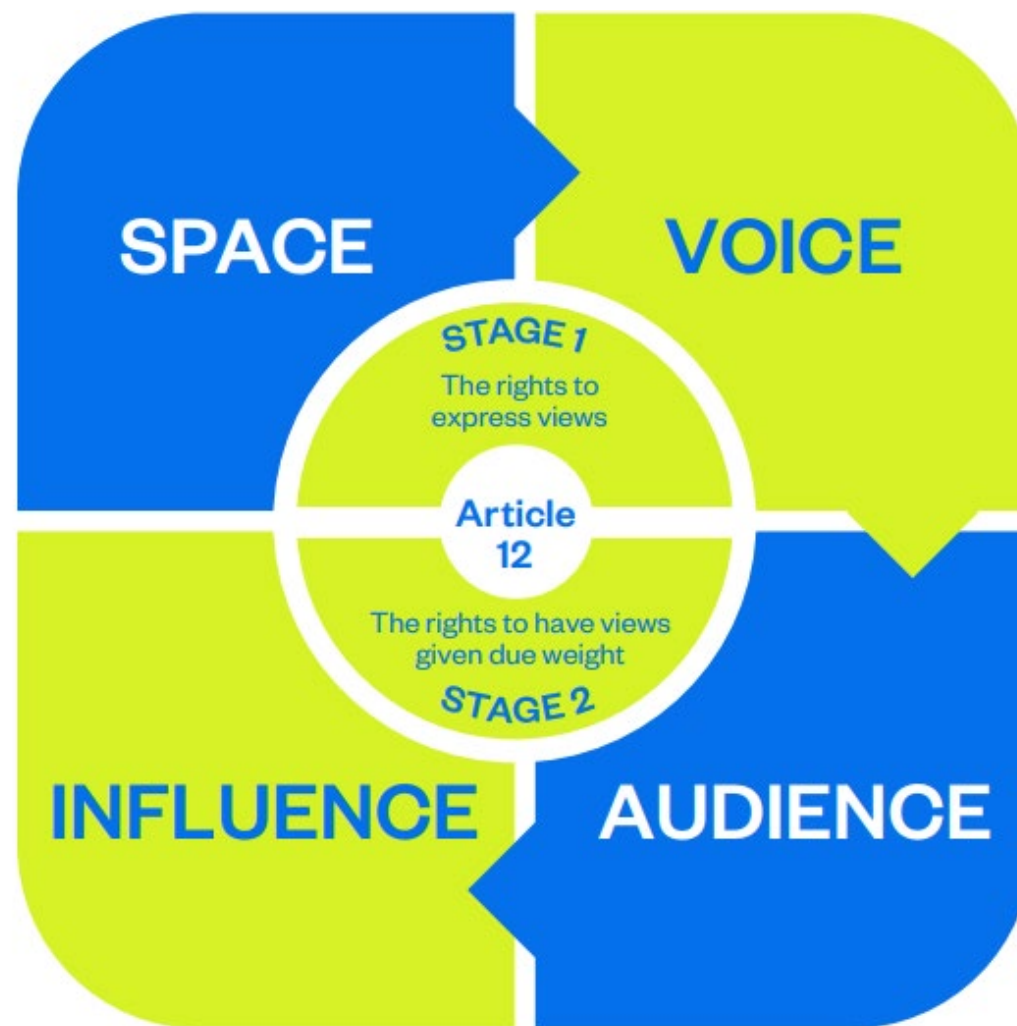


Creating safe spaces with participant voice

- When we speak to participants we can understand what they **need and want** to **feel safe and included**
- By **listening and responding** to participants, we build trust so they **feel safer** to share their views and concerns with us in the future

The Lundy Model

Greater Manchester
Moving > ^ < v



**PLAY
THEIR
WAY**

Space

Children and young people must be given safe, inclusive opportunities to form and express their views

Voice

Children and young people must be facilitated to express their views

Audience

The views must be listened to

Influence

The views must be acted upon, as appropriate

Space

Children and young people must be given safe, inclusive opportunities to form and express their views

Voice

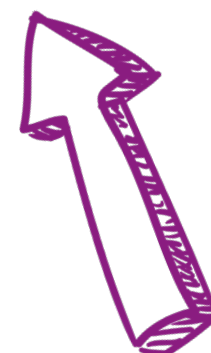
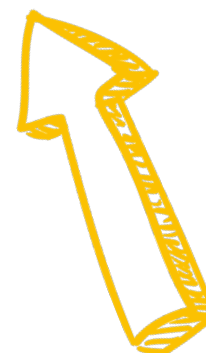
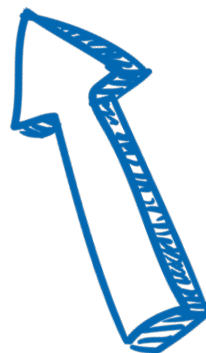
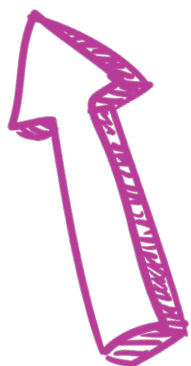
Children and young people must be facilitated to express their views

Audience

The views must be listened to

Influence

The views must be acted upon, as appropriate



GM Moving welfare
training and events

Greater Manchester
Moving > ^ < v



Street Games
Youth Voice
Toolkit



Contact us

Katie Palmer | Rachel Garbutt
Sport & Physical Activity Welfare Leads
sportswelfare@gmmoving.co.uk

Jane Nolan
Street Games Place Lead | Toward Sport MEL Lead
jane.nolan@streetgames.org

GM Moving conference 2025 - workshop feedback

